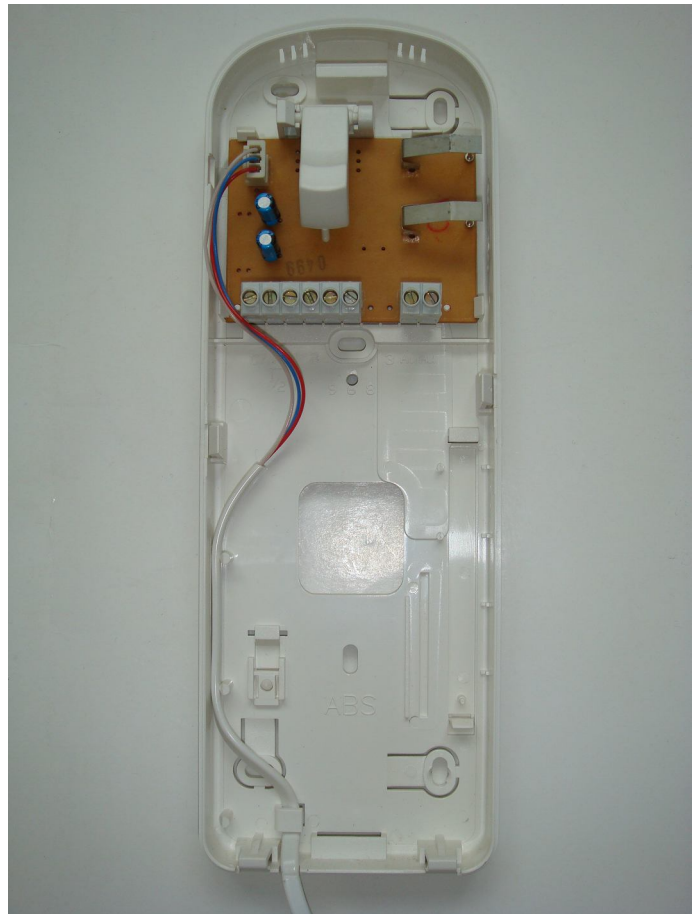


Bitron AN9102 (4+n with Tone Call)



Terminals

C7	Electronic Call
P	Not Used
1	Speech In (Speaker)
2	Speech Out (Mic)
6	Ground
AuAu	Aux Button

IMPORTANT NOTE :

1) Before replacing the handset make note of the wires to each terminal on the existing unit (an easy way is to cut each core off leaving a piece of the insulation in place with colour visible) twist unused cores together (so you know they are not used, do not short them out).

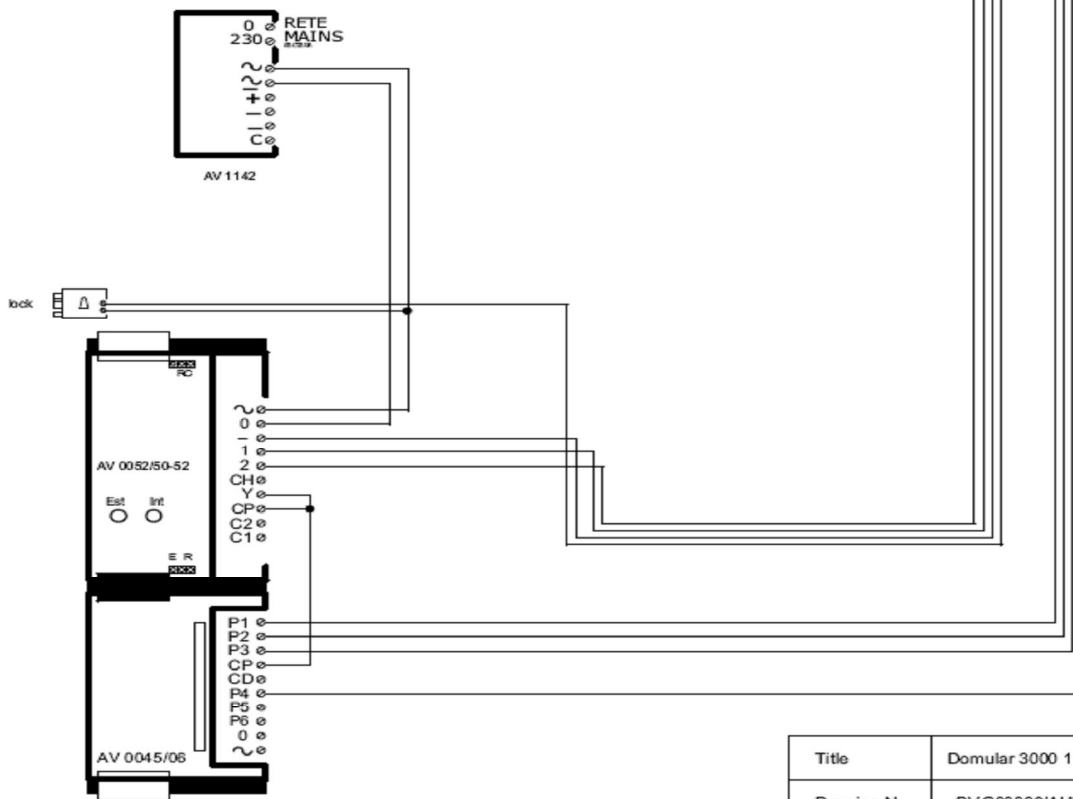
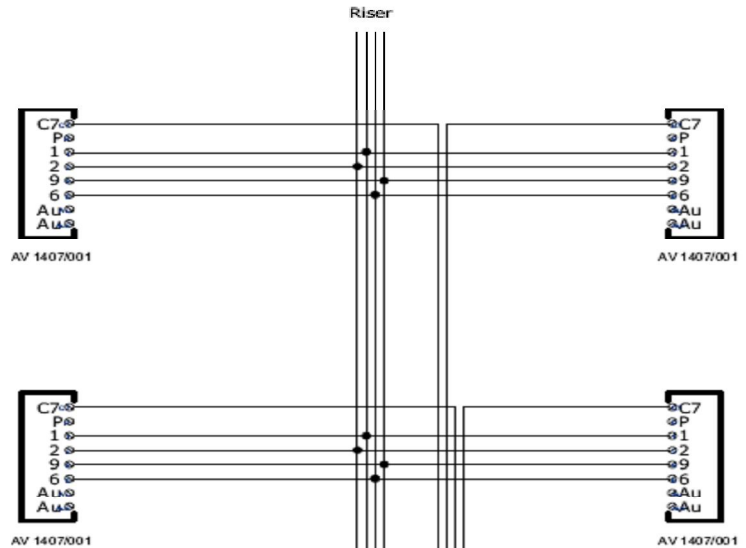
2) Some older systems will have cable with one coloured core and a solid white core in this case mark each core with a marker or tape.

3) Some systems may have loop on wiring, you will have 2 cables into your handset (make sure any joins remain, as these may be serving other flats on the system).

Wiring Diagram

Bitron Domular 3000 5 Wire Audio

Notes -
<ul style="list-style-type: none"> A = 4 pair BTcable CW1308
<ul style="list-style-type: none"> Maximum distance from power supply to handset is 100M Maximum distance from entry panel to power supply is 20M For distances 50M - 100M please add 1.0mm Brown and Blue singles from psu to entry panel. For greater distances please contact technical support. Fit MOV suppression across lock connections to protect against back emf. Set jumpers on AV0052/50-52 door unit (RC-E-R) according to instructions in the manual
<ul style="list-style-type: none"> If using a DC release/maglock, a DC power supply and relay will be required



Title	Domular 3000 1 Door 4 way 4 + n ref BV-C4N-2008		
Drawing No	BVG00033/AUD		
Date	16/01/2009		
Revision	02	Author	MD
bitronvideo STYLE AND INNOVATION www.bitronvideo.co.uk			

Wiring Diagram

Bitron Domular 3000 2 Entrance System

