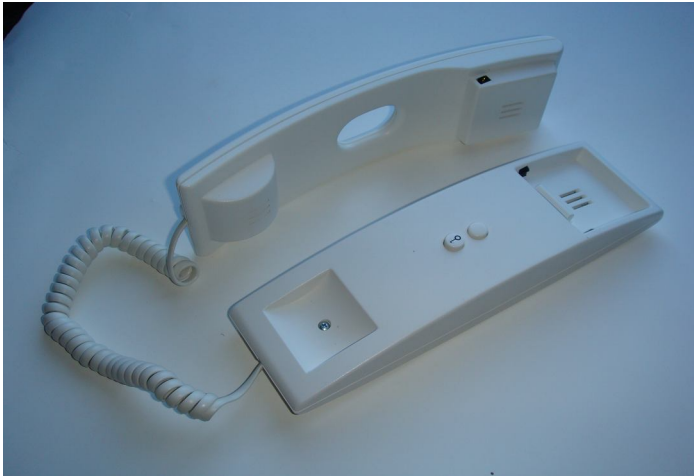
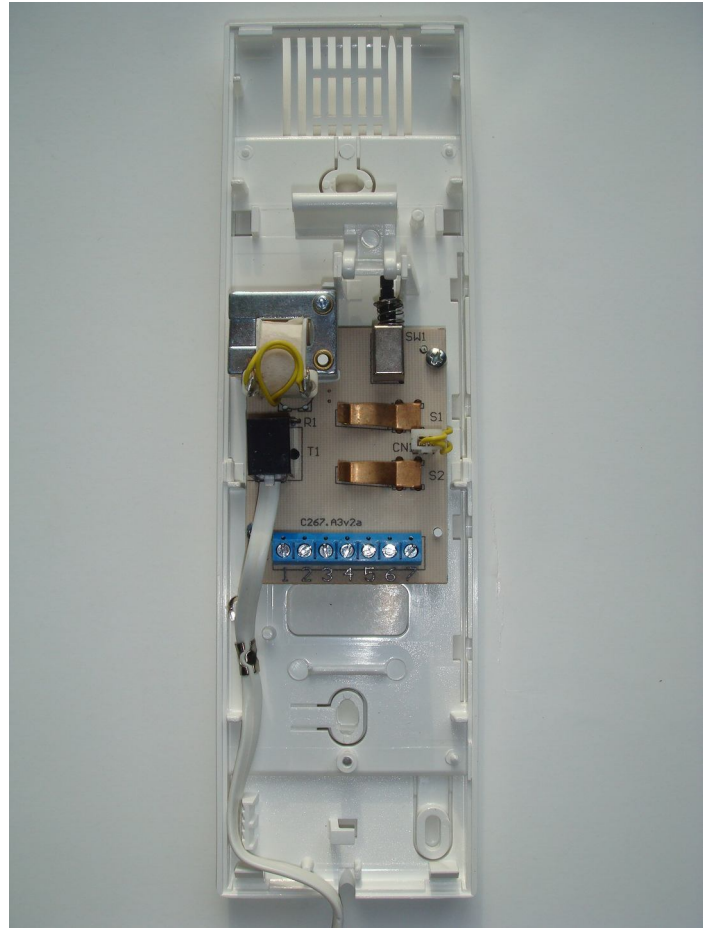


Acet 22500 (5 Wire)



Terminals

- 1 & 2 Volt Free Button
- 3 Speech In (Speaker)
- 4 Speech Out (Mic)
- 5 Call
- 6 Common
- 7 Lock

Note : There are 2 versions of this handset, they look exactly the same externally.

2 wire (22220) Has No terminal 4

5 wire (22500) Has got a 4 terminal

IMPORTANT NOTE :

- 1) Before replacing the handset make note of the wires to each terminal on the existing unit (an easy way is to cut each core off leaving a piece of the insulation in place with colour visible) twist unused cores together (so you know they are not used, do not short them out).
- 2) Some older systems will have cable with one coloured core and a solid white core in this case mark each core with a marker or tape.
- 3) Some systems may have loop on wiring, you will have 2 cables into your handset (make sure any joins remain, as these may be serving other flats on the system).

WIRING DIAGRAM

Acet 22500 (5 Wire)

